

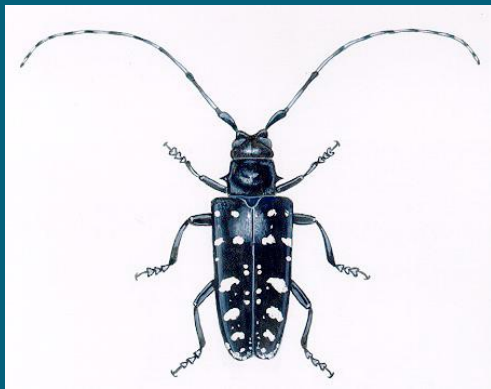


Invasive Species

The Christie Lake Association, Inc. strives to keep the Lake community informed on several invasive species that may impact Christie Lake. We face this threat of invasion both on land and in the water. Examples of invasive species that have been identified in our area include:

Land

- Asian Long Horned Beetle



<http://www.invadingspecies.com/Invaders.cfm?A=Page&PID=25>
<http://www.inspection.gc.ca/english/plaveg/pestrava/tetfus/tetfuse.shtml>

- Common Buckthorn



<http://www.invadingspecies.com/Invaders.cfm?SID=3&A=Page&PID=35>

- Dutch Elm Disease



<http://www.treecanada.ca/tree-killers/dutch-elm-disease.htm>

- [www.toronto.ca/trees/pdfs/factsheets/Dutch Elm Disease.pdf](http://www.toronto.ca/trees/pdfs/factsheets/Dutch_Elm_Disease.pdf)

<http://www.inspection.gc.ca/english/plaveg/protect/dir/d-97-07e.shtml#d>

- Elm Bark Beetle



http://www.mnr.gov.on.ca/stdprodconsume/groups/lr/@mnr/@forests/documents/document/mnr_e000179.pdf

- Emerald Ash Borer



<http://www.invadingspecies.com/Invaders.cfm?A=Page&PID=26>

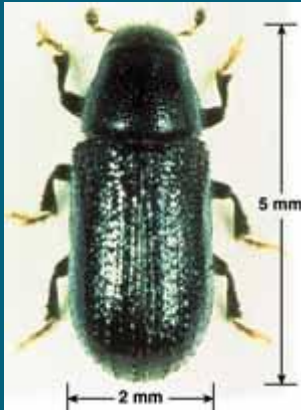
<http://www.inspection.gc.ca/english/plaveg/pestrava/agrpla/agrplae.shtml>

- Giant Hogweed



<http://www.invadingspecies.com/Invaders.cfm?SID=3>

- Pine Shoot Beetle



http://www.mnr.gov.on.ca/en/Business/Forests/2ColumnSubPage/STEL02_166995.html

Water

- Banded Mystery Snail



<http://www.invasivetrackingsystem.ca/report.php?ListType=tlkpInvSpeciesGallery&ID=38>



- Eurasian Milfoil



- Purple Loosestrife



<http://www.invadingspecies.com/Invaders.cfm?A=Page&PID=12>

<http://www.invadingspecies.com/Invaders.cfm?A=Page&PID=7>

- Spiny Water Flea



<http://www.invadingspecies.com/Invaders.cfm?A=Page&PID=2>

- Zebra Mussels



<http://www.invadingspecies.com/Invaders.cfm?A=Page&PID=1>



To that end, we have provided links that will help to educate you on identifying and preventing the spread of invasive species in and around our area. Links will be updated on a continuous basis. Also, more information can be found in the Christie Lake Stewardship Guide.