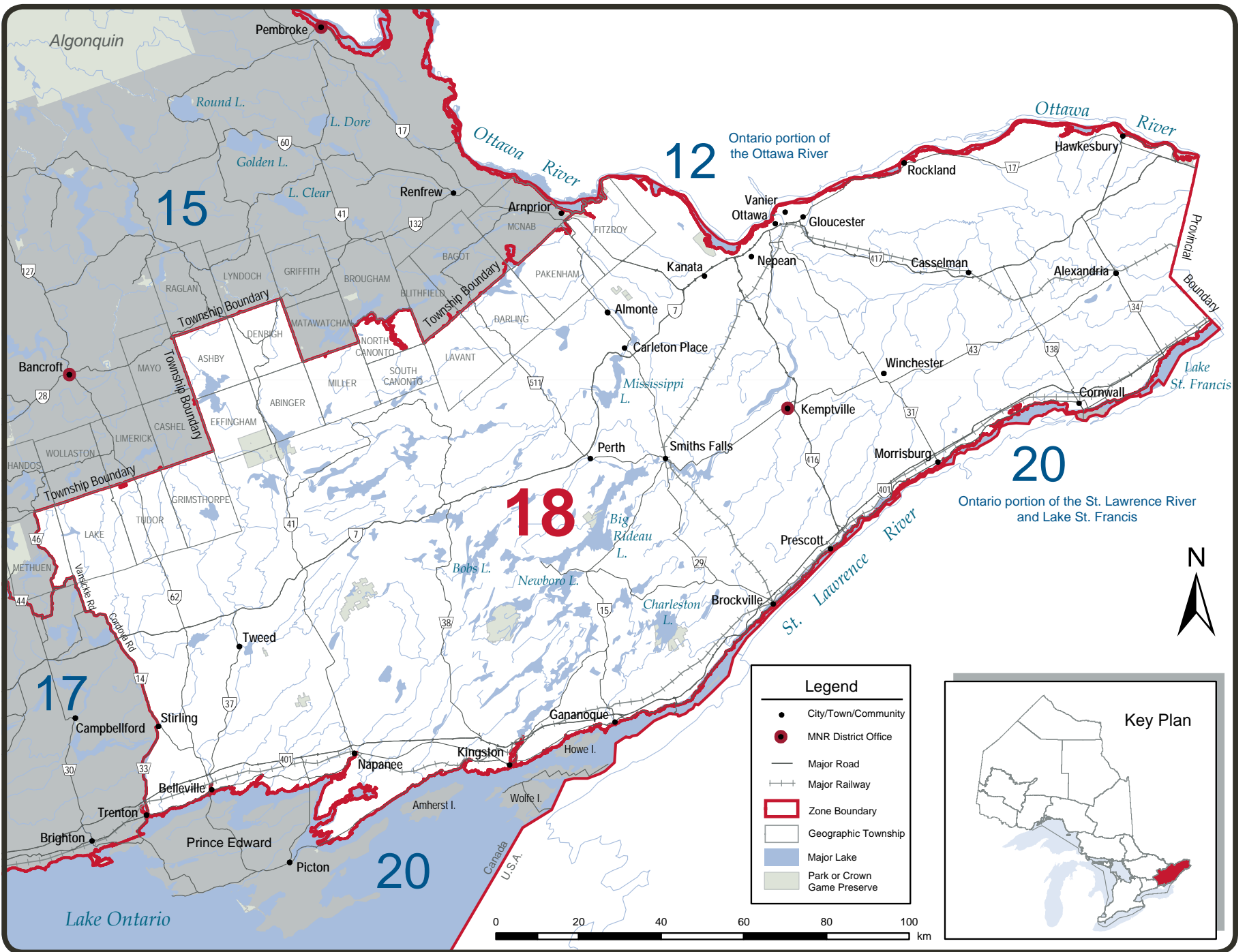


FISHERIES MANAGEMENT ZONE 18



ZONE 18 SEASONS AND LIMITS

SPECIES	OPEN SEASONS	LIMITS	SPECIES	OPEN SEASONS	LIMITS
Walleye & Sauger <i>or any combination</i>	Jan. 1 to Mar. 1 & 2nd Sat. in May to Dec. 31	S - 4; not more than 1 greater than 46 cm (18.1 in.) C - 2; not more than 1 greater than 46 cm (18.1 in.)	Brook Trout*	Open all year	S - 5 C - 2
Largemouth & Smallmouth Bass <i>or any combination</i>	4th Sat. in June to Nov. 30	S - 6 C - 2	Brown Trout*	Open all year	S - 5 C - 2
Northern Pike	Jan. 1 to Mar. 31 & 2nd Sat. in May to Dec. 31	S - 6 C - 2	Rainbow Trout*	Open all year	S - 5 C - 2
Muskellunge	1st Sat. in June to Dec. 15	S - 1; must be greater than 91 cm (36 in.) C - 0	Lake Trout*	4th Sat. in May to Sept. 8	S - 2 C - 1
Yellow Perch	Open all year	S - 50 C - 25	Splake*	Open all year	S - 5 C - 2
Crappie	Open all year	S - 30 C - 10	Pacific Salmon*	Open all year	S - 5 C - 2
Sunfish	Open all year	S - 300, only 30 may be greater than 18 cm (7.1 in.) C - 15	Atlantic Salmon*	Closed all year	
			Lake Whitefish	Open all year	S - 12 C - 6
			Lake Sturgeon	Closed all year	
			Channel Catfish	Open all year	S - 12 C - 6



American Eel is a specially protected fish species and may not be caught or possessed under a recreational fishing licence.

*Aggregate limits apply to these species. See page 7 for full details.

ADDITIONAL ZONE 18 FISHING OPPORTUNITIES

Lake trout open all year

Ashden Lake - Ashby Twp.

Big Ohlmann - Miller Twp.

Camp (Little Mackie) Lake - Miller Twp.

Freen Lake (44°45'25"N., 77°44'53"W.) - Lake Twp.

Little Green Lake - Clarendon Twp.

Long Mallory Lake - Abinger Twp.

Long Schooner Lake

(45°06'15"N., 76°58'46"W.) - Miller Twp.

Loughborough Lake (44°27'N., 76°25'W.) - Storrington Twp.

Mackie Lake - Miller Twp.

Potspoon Lake (44°36'N., 76°35'W.) - Bedford Twp.

Redhorse Lake (44°32'N., 76°05'W.)

- Leeds and Landsdowne Twps.

Reid Lake - Miller and South Canonto Twps.

Round Schooner Lake - Miller Twp.

Shabomeka Lake

(44°53'33"N., 77°08'10"W.) - Barrie Twp.

Silver Lake (44°51'N., 76°36'W.)

- South Sherbrooke and Oso Twps.

Simpson Lake - Ashby Twp.

Trout Lake - Ashby Twp.

EXCEPTIONS TO ZONE 18 REGULATIONS

WATERBODY	EXCEPTION DETAILS	WATERBODY	EXCEPTION DETAILS
Bennett Lake.	Walleye must be greater than 41 cm (16.1 in.).	Fawn Lake - Clarendon Twp.	Walleye - none between 46-61 cm (18.1-24 in.).
Big Rideau Lake (The Bog and Long Island) - Bastard and Burgess Twps.	Fish sanctuary - closed all year.	Hoople Creek - Osnabruck Twp.	Fish sanctuary - no fishing from Mar. 1 - Fri. before 2nd Sat. in May.
Christie Lake - Bathurst Twp. and downstream to bridge at Tay River, Lot 7, Conc. II.	Fish sanctuary - no fishing from Mar. 1 - Fri. before 2nd Sat. in May. Walleye - none between 35-50 cm (13.8-19.7 in.).	Indian River and Clayton Lake within a 300 m (984 ft.) radius of the Command Bridge crossing the Indian River where it enters Clayton Lake in Lanark Twp.	Fish sanctuary - no fishing from Mar. 1 - Fri. before 2nd Sat. in May.
Clayton Lake.	Walleye must be greater than 41 cm (16.1 in.).	Lancaster and Charlottenburgh Twps. (South Glengarry Twp.) and the City of Cornwall (all waters).	Yellow perch open from Jan 1 - Mar. 31 & 2nd Sat. in May - Dec. 31.
Crotch Lake and Mississippi River - Palmerston Twp.; from Sidedam Rapids to north shore of Skull Island including McLean's Bay.	Fish sanctuary - no fishing from Mar. 1 - June 15.	Lingham Lake - Grimsthorpe Twp.	Fish sanctuary - no fishing from Jan. 1 - Fri. before 4th Sat. in June & Dec. 1 - Dec. 31.
Crotch Lake.	Walleye - none between 46-61 cm (18.1-24 in.).	Mississippi River - Drummond Twp., from 79.2 m (260 ft.) east of Main Street to Mississippi Lake.	Fish sanctuary - no fishing from Mar. 1 - Fri. before 2nd Sat. in May.
Dalhousie Lake and Mississippi River within a 300 m (984 ft.) radius of the bridge of the Twp. road crossing the Mississippi River where it enters Dalhousie Lake - Dalhousie Twp.	Fish sanctuary - no fishing from Mar. 1 - Fri. before 2nd Sat. in May.	Mississippi River - Drummond Twp., from 79.2 m (260 ft.) east to 240.8 m (790 ft.) west of Main Street.	Fish sanctuary - closed all year.

EXCEPTIONS TO ZONE 18 REGULATIONS

WATERBODY	EXCEPTION DETAILS	WATERBODY	EXCEPTION DETAILS
Mississippi River - Pakenham Twp., between the falls in the Town of Almonte and upstream side of bridge on Lanark County Road 20.	Fish sanctuary - no fishing from Mar. 1 - Fri. before 2nd Sat. in May.	South Nation River - Cambridge Twp., Coupal's dam in Casselman downstream to the westerly limit of Lot 11, Conc. V.	Fish sanctuary - no fishing from Mar. 1 - Fri. before 2nd Sat. in May.
Moira Lake.	Muskellunge must be greater than 102 cm (40 in.).	South Nation River - Finch Twp., Hamlet of Cryslar.	Fish sanctuary - no fishing from Mar. 1 - Fri. before 2nd Sat. in May.
Moira River - from the first dam above Lake Ontario (in the city of Belleville) upstream to Hwy 7.	Muskellunge must be greater than 102 cm (40 in.).	South Nation River - North Plantagenet Twp., between north side of Conc. IV and a point 30.5 m (100 ft.) upstream of C.P.R. right-of-way.	Fish sanctuary - no fishing from Mar. 1 - Fri. before 2nd Sat. in May.
Newboro Lake (Old Iron Mine Bay) - North Crosby and South Crosby Twps.	Fish sanctuary - closed all year.	South Nation River - Winchester Twp., Village of Chesterville.	Fish sanctuary - no fishing from Mar. 1 - Fri. before 2nd Sat. in May.
Newboro Lake (The Bog) - South Crosby Twp.	Fish sanctuary - closed all year.	Stoco Lake (44°28'N., 77°17'W.).	Muskellunge must be greater than 102 cm (40 in.).
Opinicon Lake (Darlings Bay) - Storrington Twp.	Fish sanctuary - closed all year.	Tay River - Bathurst Twp., Lots 3 to 6 in Concs. 2 and 3.	Fish sanctuary - no fishing from Mar. 1 - Fri. before 2nd Sat. in May.
Opinicon Lake (Murphy Bay) - South Crosby Twp.	Fish sanctuary - closed all year.	Taylor Lake - Ramsay Twp.	Walleye must be greater than 41 cm (16.1 in.).
Pike Lake.	Walleye - none between 35-50 cm (13.8-19.7 in.).	Twin Island Lake.	Walleye - none between 46 - 61 cm (18.1 - 24 in.).
Raisin River - those portions of the river in the village of Martintown and Lot 43, Conc. I, north side of Raisin River in Charlottenburgh Twp.	Fish sanctuary - no fishing from Mar. 1 - Fri. before 2nd Sat. in May.	Upper Rideau Lake (44°41'N., 76°20'W.) - North Crosby Twp.	Walleye S - 2 and C - 1 must be greater than 50 cm (19.7 in.).
Rideau River.	Muskellunge must be greater than 112 cm (44 in.).	Westport Pond - North Crosby Twp.	Fish Sanctuary - Closed all year
Sand Lake - N. Crosby Twp., that part lying in Lots 15 and 16 in Conc. IX and Lot 15 in Conc. VIII, and the waters of the river flowing between Wolfe Lake and Sand Lake.	Fish sanctuary - no fishing from Mar. 1 - Fri. before 4th Sat. in June.	White Lake - Bagot, Darling and McNabb Twps.	Walleye - none between 35-50 cm (13.8-19.7 in.).
Sand Lake (Freeman's Bay) - South Crosby Twp.	Fish sanctuary - closed all year.	White Lake - Olden Twp.	Fish sanctuary - closed all year.
		Whitefish Lake (Jones Falls Bay) - South Crosby Twp.	Fish sanctuary - closed all year.

KNOW, CATCH AND CONSERVE

MUSKELLUNGE – NORTHERN PIKE Know How To Tell The Difference

Muskellunge



Clear



Spotted



Barred

Hybrid "Tiger" Muskellunge



Northern Pike



THE MUSKELLUNGE

The muskellunge (muskie) is the top predator in the freshwater food chain. Muskie can weigh over 50 pounds and be 4 to 5 feet long. They are ferocious fighters and a highly sought after game fish. Since muskie are also rare, the size limits are accordingly high and the possession limits low.

It is very important for fishermen to know the difference between muskie and the much more common northern pike which has much lower size and higher possession limits.

Muskie are too valuable to have the joy of catching just once. Catch and release angling is strongly encouraged for anglers who catch a muskie. Capture your memory in a picture or fibreglass reproduction which will last forever.

Caught and released a muskie over 36 inches long? Submit the details to Muskies Canada and receive recognition of your fine catch and a release award sticker.

Visit the Muskies Canada website for more information
www.muskiescanada.ca

